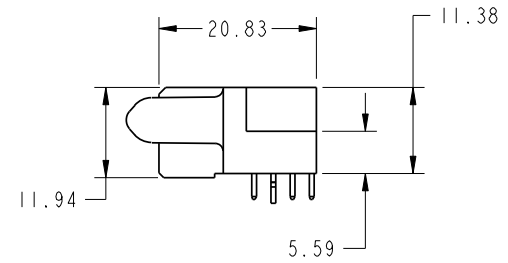
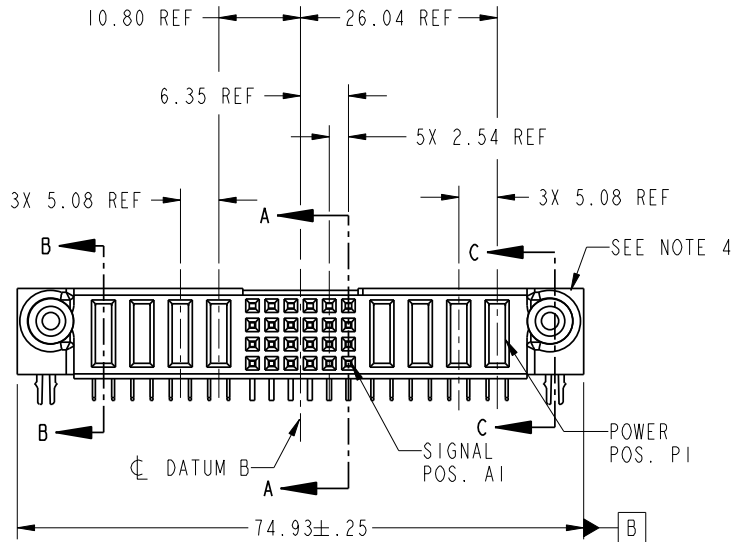
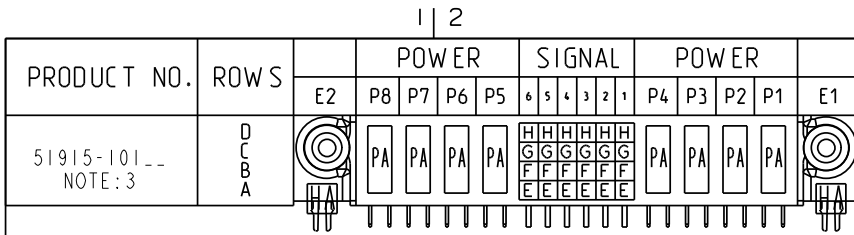


Tous droits strictement réservés. Reproduction ou communication a des tiers interdite sous quelque forme que ce soit sans autorisation écrite du propriétaire. Propriété de c FCI. Droits de reproduction FCI.

All rights strictly reserved. Reproduction or issue to third parties in any form whatever is not permitted without written authority from the proprietor. Property of FCI. Copyright FCI.



CONFIDENTIAL

CODE	DIM "M" MATING LENGTH	CONTACT TYPE
E	[N/A]	SIGNAL
F	[N/A]	SIGNAL
G	[N/A]	SIGNAL
H	[N/A]	SIGNAL
PA	[1.07]	POWER
HA	[N/A]	HOLD-DOWN

mol'l code				SEE NOTES		tolerances unless otherwise specified		CUSTOMER	
lir	ecn no.	dr	date	linear	0.X ± 0.3	COPY		FCI	
A	DG06-0184	JULIA	05/12/06	angles	0.XX ± 0.10	projection		www.fciconnect.com	
					0.XXX ± 0.050	MM		title	
				dr	0° ± 2°	scale		4P + 24S + 4P	
				enr	JULIA WANG 05/12/06	1:1		R/A SOLDER RECEPTACLE	
				chr	SALLY LUO 05/12/06			product family	
				oppd	BEER FU 05/12/06			PwrBlade	
					JOSEPH HSIA 05/12/06			code	
sheet index	revision sheet	A 1	A 2	A 3	A 4			size	
								dwg no	
								A 51915-101	
								sheet	
								1 of 4	

projection	MM	scale	1:1
------------	----	-------	-----

product family	PwrBlade	code	213
size	A	dwg no	51915-101
sheet	1 of 4		

1 | 2

Pro/E

eDOC - PDM: Rev: A

STATUS: Released

Printed: Apr 11, 2011

3 |

4

A

A

B

B

cage code 22506

4

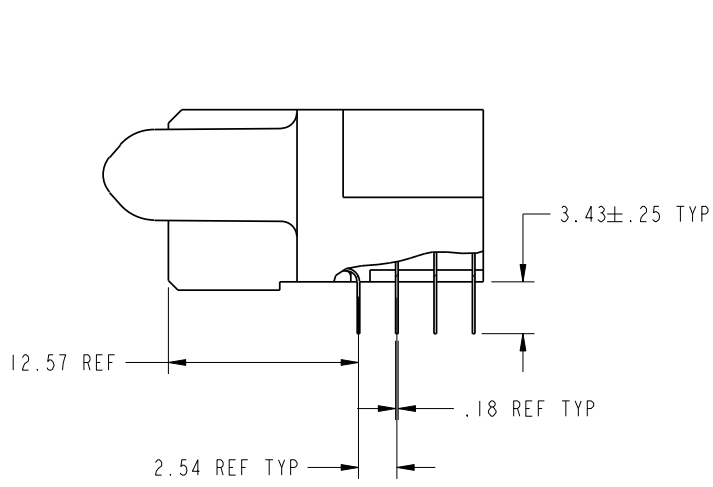
Tous droits strictement reserves. Reproduction ou communication a des tiers interdite sous quelque forme que ce soit sans autorisation ecrite du proprietaire. Propriete de c FCI. Droits de reproduction FCI.

All rights strictly reserved. Reproduction or issue to third parties in any form whatever is not permitted without written authority from the proprietor. Property of FCI. Copyright FCI.

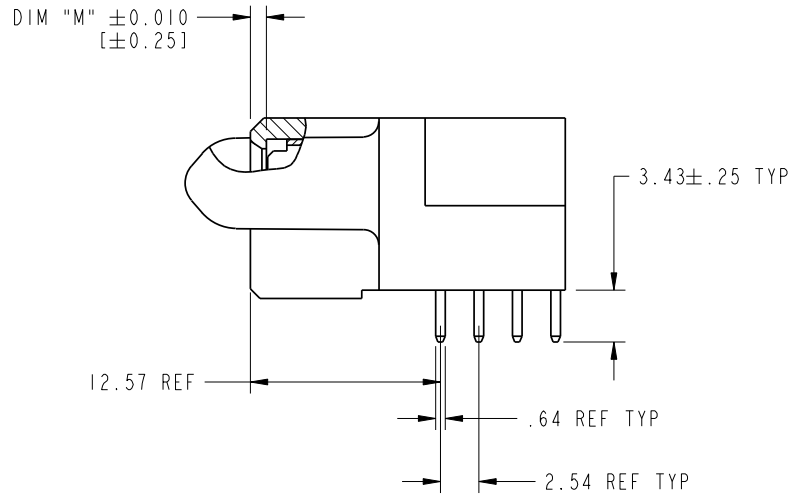


PRODUCT NUMBER

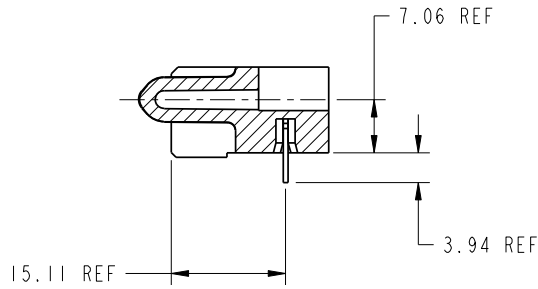
51915-101__
NOTE: 3



BROKEN-OUT SECTION A-A
SCALE 2:1



BROKEN-OUT SECTION B-B
SCALE 2:1



SECTION C-C

CONFIDENTIAL

mat'l code		SEE NOTE 2		tolerances unless otherwise specified		CUSTOMER		FCI	
lir	ecn no.	dr	date	linear	0.X ±0.3	COPY		www.fciconnect.com	
A				0.XX ±0.10	projection	projection		title	
				0.XXX ±0.050	angles	0° ±2°		4P + 24S + 4P R/A SOLDER RECEPTACLE	
				dr	JULIA WANG	05/12/06		product family	
				engr	SALLY LUO	05/12/06		PwrBlade	
				chr	BEER FU	05/12/06		code	
				appd	JOSEPH HSIA	05/12/06		213	
sheet index		revision sheet		scale		1:1		size	
								A	
								51915-101	
								sheet	
								2 of 4	

code code 22556

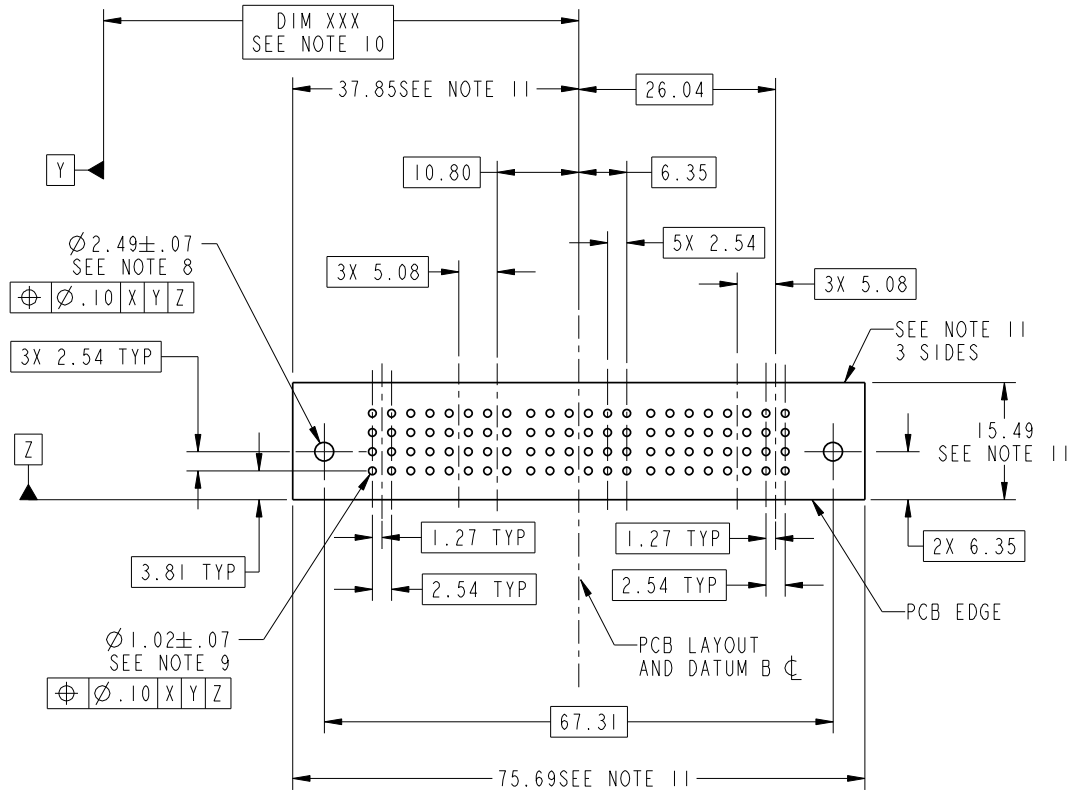
Tous droits strictement reserves. Reproduction ou communication a des tiers interdite sous quelque forme que ce soit sans autorisation écrite du propriétaire. Propriete de c FCI. Droits de reproduction FCI.

All rights strictly reserved. Reproduction or issue to third parties in any form whatever is not permitted without written authority from the proprietor. Property of FCI. Copyright FCI.



PRODUCT NUMBER

51915-101...
NOTE: 3



CONFIDENTIAL

mol'l code SEE NOTE 2				tolerances unless otherwise specified		CUSTOMER		FCI www.fciconnect.com	
lir	ecn no.	dr	date	linear	0.X ±0.3	COPY		title	
A					0.XX ±0.10	projection		4P + 24S + 4P R/A SOLDER RECEPTACLE	
				angles	0.XXX ±0.050	MM		product family	
				dr	0° ±2°	scale		PwrBlade	
				enr	JULIA WANG 05/12/06	1:1		code	
				chr	SALLY LUO 05/12/06			213	
				appd	BEER FU 05/12/06			sheet	
					JOSEPH HSIA 05/12/06			3 of 4	
sheet index	revision sheet							size	dwg no
								A	51915-101

code code 22516

Pro/E

eDOC - PDM: Rev: A

STATUS: Released

Printed: Apr 11, 2011

Tous droits strictement reserves. Reproduction ou communication a des tiers interdite sous quelque forme que ce soit sans autorisation ecrite du proprietaire. Propriete de c FCI. Droits de reproduction FCI.



All rights strictly reserved. Reproduction or issue to third parties in any form whatever is not permitted without written authority from the proprietor. Property of FCI. Copyright FCI.

1 | 2

3 |

4

PRODUCT NUMBER

51915-101__
NOTE: 3

NOTES:

1. DIMENSIONS AND TOLERANCES ARE IN ACCORDANCE WITH ASME Y14.5M, 1994 UNLESS OTHERWISE SPECIFIED.

CONNECTOR NOTES:

- 2. HOUSING MATERIAL: UL 94 V-0 GLASS FILLED
HIGH-TEMP THERMOPLASTIC
POWER CONTACT MATERIAL: COPPER ALLOY
SIGNAL PIN MATERIAL: COPPER ALLOY
- 3. PLATING:
SEE PRINT 10064183 FOR PLATING SPEC OF 51915-101; 51915-101LF
- 4. MANUFACTURER'S NAME, P/N, AND DATE CODE TO APPEAR ON THIS SURFACE.
- 5. PRODUCT SPECIFICATION GS-12-149.
APPLICATION SPECIFICATION BUS-20-067.
- 6. PACKAGED IN TRAYS.

PCB NOTES:

- 7. ALL HOLE DIAMETERS ARE FINISHED HOLE SIZE.
- 8. MOUNTING HOLES, WHERE APPLICABLE, ARE UNPLATED.
- 9. $\varnothing .0453 \pm .0010$ [1.151 \pm 0.025] DRILLED HOLES PLATED WITH .0003 [0.008] MIN SnPb OVER .001 [0.03] TO .003 [0.08] Cu PLATING TO ACHIEVE $\varnothing .040 \pm .003$ [1.02 \pm .07] HOLE.
- 10. "DIM XXX" TO BE DETERMINED BY THE CUSTOMER.
- 11. CONNECTOR KEEP-OUT ZONE.

CONFIDENTIAL

mol'l code				SEE NOTES		tolerances unless otherwise specified		CUSTOMER		FCI www.fciconnect.com		
lir	ecm no.	dr	date	linear	0.X \pm 0.3		COPY		projection	title		
A					0.XX \pm 0.10		A			4P + 24S + 4P R/A SOLDER RECEPTACLE		
					0.XXX \pm 0.050		MM			product family PwrBlade		code
				angles	0° \pm 2°		scale		A	size	dwg no	
				dr	JULIA WANG	05/12/06	1:1			51915-101		213
				enrg	SALLY LUO	05/12/06						sheet
				chr	BEER FU	05/12/06					4 of 4	
				appd	JOSEPH HSIA	05/12/06						
sheet index	revision sheet											

1 | 2

Pro/E

eDOC - PDM: Rev: A

STATUS: Released

Printed: Apr 11, 2011

code code 22526

4